

HEALTH AND SAFETY POLICY FOR PRIMARY SCHOOLS

Mornington Primary School

**Mornington Crescent
Nuthall
Nottingham
NG16 1RF**



MORNINGTON PRIMARY SCHOOL

1. STATEMENT OF INTENT

The Governing Body of Mornington Primary School will meet its responsibilities under the Health and Safety at Work Act and other health and safety legislation to provide safe and healthy working conditions for employees, and to ensure that their work does not adversely affect the health and safety of other people such as pupils, students, visitors and contractors. Details of how this will be done are given in this health and safety statement.

The Governing Body will ensure that effective consultation takes place with all employees on health and safety matters and that individuals are consulted before allocating particular health and safety functions to them.

Where necessary the Governing Body will seek specialist advice to determine the risks to health and safety in the establishment and the precautions required to deal with them.

The Governing Body will provide sufficient information and training in health and safety matters to all employees in respect to the risk to their health and safety.

The Governing Body requires the support of all staff to enable the maintenance of high standards of health and safety in all the schools activities.

The school is committed to continually improving its health and safety performance.

This Statement includes a description of the establishment's organisation and its arrangements for dealing with different areas of risk. Details of how these areas of risk will be addressed are given in the arrangements section.

Signed

(Chair of Governors)

Date

Signed

(Headteacher)

Date

Other sources of Health and Safety Information:-

- NCC Health and Safety Manual
- Education Visits Policy Documents
- Asbestos Log
- Legionella Log
- Fire Log
- Premises Manual
- Schools Intranet Service 'Wired' Health & Safety Community.

2. ORGANISATION

2.1 Responsibilities of the Governing Body

The Governing Body is responsible for:

- Complying with the County Council's and EMET's Health and Safety Policy and Arrangements;
- Formulating and ratifying the establishment's Health and Safety Statement and health and safety plan;
- Regularly reviewing health and safety arrangements annually and implementing new arrangements where necessary;
- Ensuring that the site and premises is maintained in a safe condition and that appropriate funding is allocated to this end from the school's delegated budget;
- Ensuring that risk assessments are made and recorded of all the schools work activities including those off site which could constitute a significant risk to the health and safety of employees or other persons;
- Ensuring that the statement and other relevant health and safety documentation is drawn to the attention of all employees;
- Prioritising action on health and safety matters where resources are required from the establishment's budget, seeking further advice where necessary and ensuring that action is taken;
- Reporting to the East Midlands Education Trust (EMET) any hazards which the establishment is unable to rectify from its own budget;
- Seeking specialist advice on health and safety which the establishment may not feel competent to deal with;
- Promoting high standards of health and safety within the establishment;
- Active and reactive monitoring health and safety matters within the school including health and safety inspection reports and accident reports;

2.2 Responsibilities of the Headteacher

The Headteacher is responsible for:

- Ensuring the requirements of the Occupier's Liability 1957/1984 are complied with.
- The day to day management of health and safety matters in the establishment in accordance with the health and safety policy and ensuring the health and safety arrangements are carried out in practice;
- Ensuring that risk assessments are made and recorded of all the schools work activities including those off site which could constitute a significant risk to the health and safety of employees or other persons;
- Ensuring that termly health and safety inspections are carried out and a copy of the report is given to the Governors;
- Ensuring that remedial action is taken following health and safety inspections;
- Ensuring that information received on health and safety matters is passed to the appropriate people;
- Identifying staff health and safety training needs and arranging for them to be provided;

- Attending the establishment's health and safety committee;
- Drawing up the establishments annual health and safety action plan;
- Co-operating with and providing necessary facilities for trades union safety representative;
- Participating in NCC health and safety auditing arrangements and ensuring audit action plans are implemented;
- Monitoring purchasing and maintenance of equipment and materials and ensuring that it complies with current health and safety standards;
- Monitoring contractors and ensuring that only competent, approved contractors are engaged to work on the school site;
- Seeking specialist advice on health and safety matters where appropriate;
- Ensuring that a procedure is in place to deal safely with persons on the premises who may be under the influence of alcohol or drugs.

Note: in the absence of the Headteacher these responsibilities fall to his/her immediate deputy.

2.3 Responsibilities of the Health and Safety Co-ordinator

Responsible to the Headteacher for:

- Attending appropriate Health and Safety Training Courses to enable him/her to discharge his/her duties effectively;
- Promoting health and safety matters throughout the school and assisting the Headteacher in the implementation of the County Council's / Trusts and School's Health and Safety Procedures;
- Ensuring that Health and Safety Manuals and associated Logs (fire, asbestos, legionella etc) are kept up to date;
- Ensuring that the Health and Safety staff information board is kept up to date;
- Ensuring that the correct accident reporting procedures are followed and that where appropriate accidents are investigated;
- Arranging termly health and safety inspections and ensuring follow up action is completed and that completed reports are sent to the Health and Safety Team;
- Ensuring appropriate procedures for authorisation of school visits is followed;
- Participating in any Health and Safety Audits arranged by the Local Authority;
- Providing health and safety induction training for all staff;
- Keeping staff health and safety training records up to date;
- Ensuring that all statutory inspections are completed and records kept;
- Ensuring that emergency drills and procedures are carried out regularly and monitored for effectiveness;

- Monitoring contractors on site, inducting them in the schools site health & safety rules and ensuring they consult the asbestos log.

2.4 Subject Co-ordinators

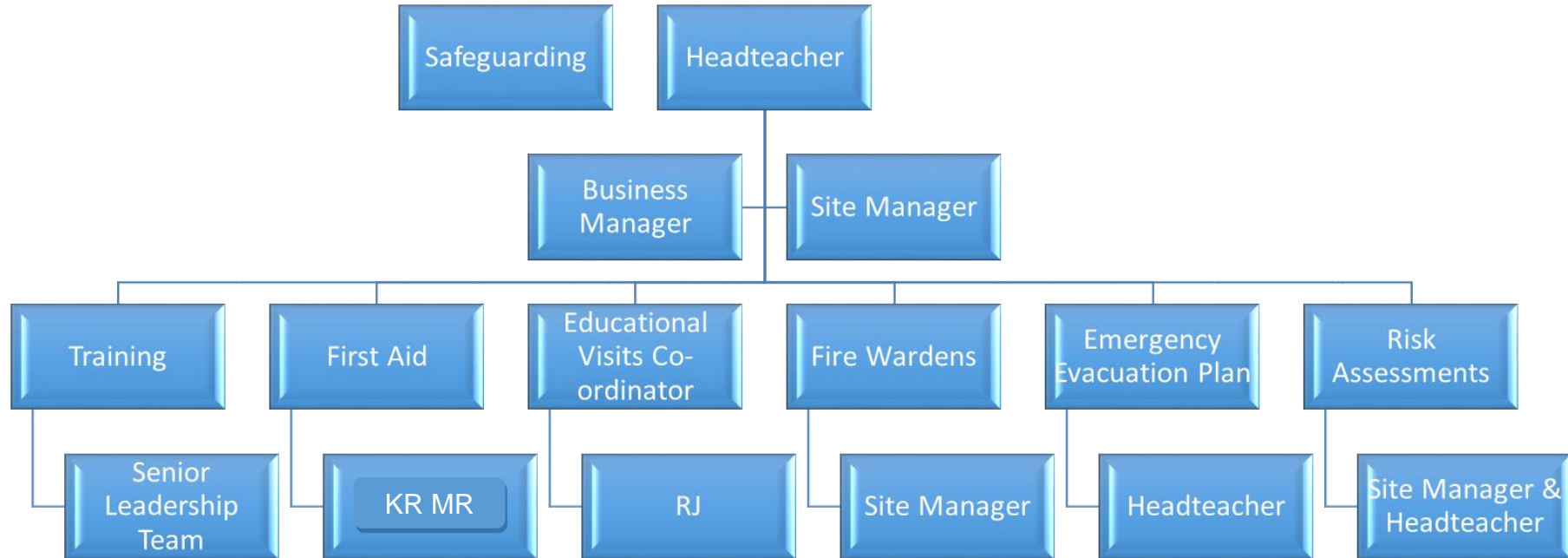
Heads of Department are responsible for:

- The day to day management of health and safety within their subject in accordance with the health and safety policy;
- Drawing up and reviewing policies, procedures and risk assessments. Risk Assessments to be reviewed at least once annually;
- Carrying out regular health and safety monitoring inspections in areas of the school and making reports to the headteacher where appropriate;
- Ensuring follow up and remedial action is taken following health and safety inspections
- Arranging for the appropriate subject specific health and safety training to be provided to all staff within the department;
- Passing on health and safety information received to the appropriate people;
- Acting on health and safety reports from above and below in the hierarchy

2.5 Responsibilities of all staff

All staff employed at the establishment have responsibility to:

- take reasonable care for the health and safety of themselves and others when undertaking their work;
- checking classrooms/work areas are safe;
- checking equipment is safe before use;
- ensuring safe working procedures are followed;
- co-operating with the Local Authority / , school governors and headteacher on all matters relating to health and safety by complying with the health and safety policy;
- not intentionally or recklessly interfering with or misusing any equipment or fittings provided in the interests of health safety and welfare;
- reporting immediately to their Headteacher/Line Manager any serious or immediate danger;
- reporting to their Headteacher/Line Manager any shortcomings in the arrangements for health and safety;
- ensure that they only use equipment or machinery which they are competent to use or have been trained to use;
- participating in health and safety inspections and the health and safety committee where appropriate.



3 ARRANGEMENTS

Co-ordination and Communication

Health and Safety Co-ordinator

The Senior Member of Staff in the Establishment with special responsibility for Health and Safety Matters (Health and Safety Co-ordinator) is:	Headteacher
--	-------------

Health and Safety Representatives

The members of the establishment staff who are health and safety representatives for the professional associations are:

Professional Association	Name

Safety Representatives and Safety Committees

Any employee appointed as a safety representative by his/her Association or trade union will be offered facilities in Accordance with the Authority's Code of Practice. and is required to inform:	Linda Azemia Headteacher
--	-------------------------------------

Emergencies (Fire etc)

Emergency procedures covering a range of hazardous situations which may arise in the establishment can be found in the following locations:

Type of emergency procedure	Location(s)	
Fire Evacuation Procedure	Fire Log Book	OFFICE
Bomb Alert	Emergency Plan	OFFICE/FRONTER
Gas Leak	Emergency Plan	OFFICE/FRONTER
Electrical Fault	Emergency Plan	OFFICE/FRONTER
Water	Emergency Plan	OFFICE/FRONTER
Storm or Flood Damage	Emergency Plan	OFFICE/FRONTER
Persons Threatening Violence on Site	Emergency Plan & Security Policy	OFFICE/FRONTER
Dangerous Animal(s) on Site	Emergency Plan	OFFICE/FRONTER
Other	Health & Safety Policy	OFFICE/FRONTER

The person who discovers the emergency will raise the alarm immediately by the most appropriate means and ensure that the Headteacher, Deputy Headteacher or in their absence, a member of the senior management team is informed immediately and that where appropriate the emergency services are summoned. He/she will liaise with the emergency services when they arrive and take advice from them.

The person (and deputy) responsible for person for ensuring and supervising (where appropriate)	Person	Deputy
---	--------	--------

the controlled evacuation of people from the building or on the site to a place of safety,	HT	DHT/BM
• summoning of the emergency services	Finance Officer	OFFICE MANAGER
• that a roll call is taken at the assembly point	HT	DHT/SLT
• that no-one attempts to re-enter the building until the all clear is given by the emergency services is (eg <i>Headteacher, Deputy Headteacher or other member of the senior management team</i>)	HT	DHT/SLT

Note: The priorities are as follows:

- **to ensure the safety of all persons people, their removal from danger, their care and the application of first aid and medical treatment where appropriate;**
- **to call the emergency services when appropriate;**
- **to safeguard the premises and equipment, if this is possible without putting persons at risk.**

The person responsible for arranging, recording and monitoring emergency evacuation drills at least once per term is:	Linda Azemia Headteacher
---	-------------------------------------

Details of the locations of all hazardous and flammable substances on site in case of emergency are kept: (eg. in the school office)	First Copy SCHOOL OFFICE
	Second Copy CATERING OFFICE
The competent person responsible for carrying out and updating the fire risk assessment for the premises is:	Linda Azemia Headteacher

Fire Prevention and Detection Equipment Arrangements

The person(s) responsible for initiating the test of the following fire safety systems and completing the record sheets:

<u>System</u>	<u>Location of Test Records</u>	<u>Person Responsible</u>
Fire Alarm	SCHOOL OFFICE	Alan Huckerby Site Manager
Emergency Lighting System		
Smoke Detection System		
The person responsible for carrying out a termly visual inspection of all emergency fire fighting equipment (for example, fire hoses, fire extinguishers, fire blankets) and to whom any short comings should be immediately reported is:		Alan Huckerby Site Manager
The contractor responsible for conducting the annual test of		Notts Fire & Rescue Service

fire fighting equipment inspection and maintenance is:	01623 825516
--	--------------

Locations of Main Service Isolation Points

The locations of the positions of all main service isolation points are as follows:

SERVICE	LOCATION OF ISOLATION POINT DETAILS
Water	Kitchen Storeroom
Electricity	Boiler House
Gas	Kitchen Storeroom Boiler House

Note: See also 'Coping with a schools emergency' document available from WIRED and kept at the school in the Health & Safety Policy completed by Linda Azemia.

Severe Weather

During periods of severe weather, arrangements for maintaining safe access to, from and within the premises (e.g. clearing snow and ice) will be determined by:	Alan Huckerby Site Manager
---	-------------------------------

Accidents and Medical

Accident, Dangerous Occurrence, Violent Incident and Near Miss Reporting and Investigation

Any employee who witnesses an accident, dangerous occurrence, verbal abuse or actual or threatened violence or near miss, or to whom one is reported, will make an entry in the accident report book as soon as possible after the event:

Accident book(s) are kept by the following people at the location(s) specified:

Location of Accident Book	Person in Charge of Accident Book
SCHOOL OFFICE	Karen Ratcliffe Office Manager
SKYLARKS	Carol Rutter Skylarks Supervisor
HI FIVE Catering	Mary Keightley Catering Manager
Midday Team	Laura Brown Senior Midday
Accident reports should be drawn to the attention of and counter-signed by the Headteacher of his/her Deputy before being sent to the Health and Safety Team via the Wellworker online system.	Linda Azemia Headteacher
	Deputy: Clare Smith Rebecca Joyce
The person responsible for monitoring accidents and incidents to identify trends and patterns is:	Linda Azemia Headteacher

Where accidents are found to be caused by faulty plant, equipment, premises or unsafe systems of work action must be taken to remove or isolate the hazard and warn people until the necessary modifications or repairs can be made.

First Aid

The following employees are **first aiders**

First Aid at Work

Name	Location/Extension	Date of Expiry of Certificate
Karen Ratcliffe	SCHOOL OFFICE	January 2019
Megan Ratcliffe	Ks1	January 2019
Linda Azemia	Office	June 2021

Paediatric First Aiders

Name	Location/Extension	Date of Expiry of Certificate
J Wheatcroft	Fs2	November 2020
Megan Ratcliffe	Ks1	November 2020
B Bounds	Fs2	November 2020
L Thompson	Ks2	November 2020
T Brewster	Lunch/Ks2	November 2020
S Mookhtiar	Fs2/Ks1	November 2020
A ANsell	Dining Room	November 2020

Basic First Aid

Name	Location/Role	Date of Expiry of Certificate
Laura Brown	Midday/Skylarks	25.11.15
Bridgette Dolman Milner	Teaching Assistant	25.11.15
Clare Dixon	Teaching Assistant	25.11.15
Megan Ratcliffe	Teaching Assistant	25.11.15
Joy Hill	Teaching Assistant	25.11.15
Rebecca Joyce	DHT	25.11.15
Carla Smith	SENCO	25.11.15
Hetty Moran	Teaching Assistant	25.11.15
Pam Pearson	Teaching Assistant	25.11.15
Mary Keightley	Catering Manager	25.11.15
Carol Rutter	Skylark Manager	25.11.15
Kally Kaur	Skylarks	25.11.15
Karen Kaur	Midday Team	25.11.15
Teresa Wigg	Teaching Assistant	25.11.15
Jaime Wheatcroft	Fs2 Senior Teacher/Assistant Ks1 leader	25.11.15
Clare Smith	DHT	25.11.15
Brenda Donnison	Admin Assistant	25.11.15

****Basic First Aid Renewal booked for all staff 26.10.18****

Display Point	Display Point
SCHOOL OFFICE	Staffroom
CATERING OFFICE	
The person responsible for ensuring first aid qualifications are maintained is:	Karen Ratcliffe Office Manager
The person responsible for ensuring that first aid cover is provided for staff working out of normal school hours is:	Karen Ratcliffe Office Manager

First aid boxes and first aid record books are kept at the following points in the school.

Location of First Aid Box(es)	First Aid Record Book(s)
Lower Ks2 Corridor	SCHOOL OFFICE
C5m class	STAFFROOM (Midday Team)
Ks1 Corridor	Skylarks
Fs2 Class	
LW Class	
Ks2 Corridor	
Kitchen	

Travelling first aid boxes are kept at the following points in the school.

Location of Travelling First Aid Box	Location of Travelling First Aid Box
Ks1 Department	Ks2 Department

A termly check on the location and contents of all first aid boxes will be made by.	Megan Ratcliffe Senior First Aider
Use of first aid materials and deficiencies should be reported to: who is responsible for their replenishment.	Karen Ratcliffe Office Manager
The address and telephone number of the nearest medical centre/NHS GP is:	Assarts Farm Practice
	0115 9794456
The address and telephone number of the nearest hospital with accident and emergency facilities is:	QMC
	Main Switchboard 0115 9249924

Administration of Medicines

The person responsible for dealing with the administration of medicines in accordance with the Supporting Pupils with Medical Needs in Schools Document*, including keeping records of parental permission, keeping medicines secure, keeping records of administration, and safely disposing of medicines which are no longer required is:	First Karen Ratcliffe
	Deputy Karen Ratcliffe
The person responsible for the dealing with the administration of controlled drugs such as ritalin in accordance with the Supporting Pupils with Medical Needs in Schools Document*, including keeping records of parental permission, liaising with the providing pharmacist, keeping medicines secure, keeping records of administration, and safely disposing of medicines which are no longer required is:	First Karen Ratcliffe
	Second Megan Ratcliffe
The person(s) responsible for undertaking and reviewing the healthcare plans of pupils with medical needs is:	Carla Smith SENCo Joy Hill Senior TA

Hazard Control

Risk Assessment

The person responsible for carrying out a general survey of the school's work activities including extra-curricular, extra-mural activities, work carried out by contractors or volunteers on site, identifying hazards and ensuring risk assessment are produced and appropriately communicated is:	Linda Azemia Headteacher
--	-------------------------------------

Hazard Reporting and Follow Up

All employees and governors must report any hazards that could be a cause of serious or imminent danger, e.g. damaged electrical sockets, broken windows, suspected gas leaks, wet or slippery floors immediately, by telephone to:	Linda Azemia Headteacher Alan Huckerby Site Manager
Verbal reports should be followed up in writing using the hazard reporting form which can be found:	Every Management System : ISSUES login
It should then be placed/given to	Email generation to Headteacher, Business Manager and Site Manager
The person responsible for initiating a risk assessment of hazards identified and any remedial action decided upon is:	Linda Azemia Headteacher

Repairs and Maintenance

A person encountering any damage or wear and tear of the premises which may constitute a hazard should report it to; by means of the hazard reporting procedure	Alan Huckerby Site Manager
Defective furniture should be taken out of use immediately and reported to: who will arrange for its replacement or repair	Alan Huckerby Site Manager
The person responsible for ordering repairs which are the school's responsibility is:	Alan Huckerby Site Manager
The person responsible for reporting repairs which are the responsibility of EMET and checking repairs are carried out is:	Linda Azemia Headteacher
The name and telephone number of the school's attached maintenance surveyor is:	Name: Carol Sheffield EMET
	Telephone Number: 01159744488

Security

Premises Security

The person (and their deputy) responsible for unlocking and locking the building, arming and disarming security alarms etc is:	First Alan Huckerby Site Manager
	Deputy Linda Azemia Headteacher
	3 rd Rebecca Joyce DHT
The person(s) who has/have been trained to deal safely with burglar alarm call outs is/are	First Alan Huckerby Site Manager
	Deputy Linda Azemia Headteacher
	3 rd Rebecca Joyce DHT

Visitors

On arrival all visitors should report to: where they are required to sign in using our management system InVentry. They are issued with : <ul style="list-style-type: none"> • an identification badge • relevant health and safety information is shared with visitors who are new to the school • Fire Evacuation information is on display above the sign in point. 	Karen Ratcliffe Office Manager
An employee seeing an unidentified person should act in accordance with agreed procedures which can be found:	Emergency Plan

Lone Working

The person responsible for ensuring risk assessments are prepared and implemented for lone working activities is:	Linda Azemia Headteacher
---	-----------------------------

Information, Instruction and Training

Provision of Information

The person responsible for distributing all health and safety information received from the LA and elsewhere and for the maintenance of a health and safety information reference system is:	Linda Azemia Headteacher
Records of employees signatures indicating that they have received and read and understood health and safety information are kept:	In the School Office

New employees will be informed of all relevant health and safety information as part of the induction process.

Health and Safety Documentation will be kept in the Health and Safety manual which is kept:	In the School Office
The person responsible for maintaining it is:	Linda Azemia Headteacher
The person responsible for deciding on the appropriate circulation of each document is: Employees will sign to confirm they have read and understood the information.	Linda Azemia Headteacher
The health and safety notice board is sited:	STAFFROOM
The person responsible for ensuring documents are displayed for two weeks on the health and safety noticeboard and keeping it up to date is:	Karen Ratcliffe Office Manager
The Health and Safety Law Poster is sited:	STAFFROOM
The person responsible for maintaining it is	Karen Ratcliffe Office Manager

Health and Safety Training

The person responsible for drawing to the attention of all employees the following health and safety matters as part of their induction training is:	Linda Azemia Headteacher
--	-----------------------------

- Health and Safety Policies: County Council, Trust, Departmental, and School.
- NCC Health and Safety Manual
- Codes of Safe Practice and Guidance
- Education Visits Documents
- Local Asbestos Management Plan & Asbestos Condition Log
- Legionella Log
- Risk Assessment
- Fire and other Emergency Arrangements
- Accident Reporting Arrangements
- First Aid Arrangements
- Safe Use of Work Equipment
- Procures for Hazardous Substances
- Good Housekeeping, Waste Disposal and Cleaning Arrangements
- Hazard Reporting and Maintenance Procedures
- Special Hazards/Responsibilities Associated with their Work Activity
- Special Needs of Young Employees (e.g. Work Experience Placements)

The person responsible for co-ordinating the provision of the health and safety training needs of teaching staff in consultation with their line managers and the employees concerned is:	Karen Ratcliffe Office Manager
The person responsible for co-ordinating the provision of the health and safety training needs of support staff in consultation with their line managers is:	Karen Ratcliffe Office Manager

The person responsible for compiling and implementing the school's annual health and safety training plan is:	Linda Azemia Headteacher
The person responsible for reviewing the effectiveness of health and safety training is:	Linda Azemia Headteacher
The person responsible for keeping records of training and certification for the use of hazardous machinery such as woodworking machinery, etc is	Karen Ratcliffe Office Manager
Employees who feel that they have need for health and safety training of any kind should notify in writing the contact person who is:	Karen Ratcliffe Office Manager

Manual Handling

Manual Handling of Objects

The person(s) responsible for identifying hazardous manual handling activities involving objects is and arranging for their elimination or risk assessment is:	Linda Azemia Headteacher & SLT
The person responsible for monitoring the safety of manual handling activities is:	Linda Azemia Headteacher

Manual Handling of People

The person responsible for identifying hazardous manual handling activities involving people and arranging for their elimination or risk assessment is:	Linda Azemia Headteacher
---	-----------------------------

PREMISES

Asbestos

The person responsible for making arrangements for dealing with asbestos in compliance with the County Council's policy, and ensuring that the Local Asbestos Management Plan and premises asbestos log is consulted by visiting contractors and other relevant persons is:	Linda Azemia Headteacher
The premises Local Asbestos Management Plan (LAMP) and asbestos log is kept:	In the School Office
The person responsible for ensuring that the LAMP and asbestos log is updated, annually and as appropriate following work on the fabric of the building is:	Linda Azemia No Asbestos in school

Legionella

The person with overall responsibility for managing Legionella is:	Alan Huckerby Site Manager
The schools Legionella risk assessment is kept:	In the School Office
The person with responsibility for ensuring that remedial actions from the report are followed through is:	Linda Azemia Headteacher
The water temperatures are taken (monthly) by:	Alan Huckerby Site Manager

	NNC Legionella Team make ½ termly checks
The flushing of little used outlets is carried out by:	Alan Huckerby Site Manager
The log book is kept in:	In the School Office

Work Equipment

SPECIFIC RISKS

The following equipment has been identified as likely to involve a specific risk to health and safety and its use, inspection and repair is therefore restricted to: -

Access Equipment

Powered Access Equipment, Mobile Access Platforms, Tower Scaffolds

Person responsible for selection, inspection, maintenance, training, supervision, safe use and risk assessment is:	Alan Huckerby Site Manager
Person(s) authorised to operate and use is/are:	NA
Training in safe use received from: including dates	NCC

Ladders

Person responsible for selection, inspection, maintenance, training, supervision, safe use and risk assessment is:	Alan Huckerby Site Manager
Person(s) authorised to use is/are:	Alan Huckerby Site Manager

Stepladders

Person responsible for selection, inspection, maintenance, training, supervision, safe use and risk assessment is:	Alan Huckerby Site Manager
Person(s) authorised to use is/are:	All trained staff

Manual Handling Equipment

This includes equipment used for the manual handling of loads and equipment used for the manual handling of people.

The person responsible for ensuring that sack barrows, flat-bed trolleys etc are maintained in a safe condition is	Alan Huckerby Site Manager
--	-------------------------------

Equipment Provided for Pupils with Special Educational Needs

The person responsible for ensuring that all hoists, both ceiling mounted and mobile, used for moving people are inspected and serviced every six months by a competent contractor and kept in good working order is:	NA
The person responsible for ensuring that slings are laundered	NA

regularly and appropriately and kept in a hygienic condition is:	
The person responsible for ensuring that all wheelchairs, Standing frames are inspected and serviced annually by a competent person and kept in a safe any hygienic condition and in good working order on a day to day basis is:	NA
The person responsible for ensuring that other special needs equipment is kept in good working order and serviced appropriately is:	Carla Smith SENCo

Lifts

The person responsible for ensuring that lifts are inspected and serviced every six months is:	NA
--	----

Caretaking and Cleaning Equipment

This includes moving and handling equipment; powered cleaning equipment, power tools, hand tools

Person responsible for selection, inspection, maintenance, training, supervision, safe use and risk assessment is:	Karen Ratcliffe Office Manager
Person(s) authorised to operate and use is/are:	Alan Huckerby Site Manager & Site Staff

PE Equipment

Person responsible for selection, inspection, maintenance, training, supervision, safe use and risk assessment is:	Karen Ratcliffe Office Manager
Person(s) responsible for regular (daily) visual inspection is/are:	Alan Huckerby Site Manager
Contractor responsible for annual full inspection and report is:	SportsSafe 01206 795265

Outdoor Play Equipment

Person responsible for selection, inspection, maintenance, training, supervision, safe use and risk assessment is:	Linda Azemia Headteacher
Person(s) responsible for regular (daily) visual inspection is/are:	Alan Huckerby Site Manager
Contractor responsible for annual full inspection and report is:	Notts CC

Stage Lighting Equipment

Person responsible for selection, inspection, maintenance, training, supervision, safe use and risk assessment is	NA
Person(s) authorised to operate and use is/are:	NA

Mobile Staging and Seating

Person responsible for selection, inspection, maintenance, training, supervision, safe use and risk assessment is:	Alan Huckerby Site Manager
--	-------------------------------

Person(s) authorised to operate and use is /are:	All trained Staff
--	-------------------

Portable Electrical Appliances and Hard Wiring

The person responsible for ensuring portable electrical Appliance testing is carried out at appropriate intervals and recorded is:	Linda Azemia Headteacher
Person(s) responsible for carrying out formal visual inspection and testing is/are:	Nobles
Staff must not bring onto the premises any portable electrical appliances unless they have authorised and the appliances have been portable appliance tested. The person responsible for authorising their use on the premises is:	Linda Azemia Headteacher
The person responsible for ensuring that the premises hard wiring is periodically checked (5yrs) is:	Linda Azemia Headteacher
The person responsible for ensuring that any remedial's are actioned is taken if identified in the hard wiring test is:	Linda Azemia Headteacher

Display Screen Equipment

The following employees are classified as users of display screen equipment and an assessment will be made of their workstations. They will be entitled to a regular eye test.

Employee Name
Karen Ratcliffe Office manager
Brenda Donnison Admin Assistant
Julie Donaghue Admin Assistant
Linda Azemia Headteacher

The competent (trained) person responsible for carrying out display screen equipment risk assessments is:	Karen Ratcliffe Office Manager
The person responsible for implementing the requirements of the risk assessment is:	Karen Ratcliffe Office Manager

Substances and Personal Protective Equipment

Hazardous Substances

Inventories of hazardous substances used in the school are maintained by the following employees at the locations specified:

Science	Science Co-ordinator
Caretaking and Cleaning	Alan Huckerby Site Manager
Catering	Mary Keightley Catering Manager
Grounds Maintenance	Alan Huckerby Site Manager
Other	
Copies of all the hazardous substances inventories are held centrally in:	In the School Office
The person responsible for undertaking and updating the	Linda Azemia

COSHH risk assessments is:	Headteacher
The person responsible for ensuring that local exhaust ventilation (fume cupboards, dust extraction equipment on woodworking machines etc) will be examined annually and tested by the County Council approved contractor is:	Linda Azemia Headteacher
The reports will be kept available for inspection by:	Karen Ratcliffe Office Manager

Personal Protective Equipment (PPE)

Suitable PPE will be provided free of charge, where identified as necessary in a risk assessment.

All employees are responsible for informing their manager as soon as they become aware of a need to repair or replace PPE, which they use.

The persons responsible for inspecting PPE termly and Replacing personal protective equipment when it is worn out are as follows	Linda Azemia Headteacher
The person responsible for making arrangements for laundering soiled PPE (e.g. overalls, aprons etc) is:	Linda Azemia Headteacher

Respiratory Protective Equipment

The person responsible for the risk assessment, provision, Storage maintenance, inspection, repair and replacement of respiratory protective equipment is:	Alan Huckerby Site Manager
--	-------------------------------

Housekeeping and Waste

Cleaning Arrangements

All members of staff are responsible for arranging to clear up spillages, which occur whilst they are in charge of the area concerned. Other spillages, leaks or wet floors should be reported to the Caretaker who will arrange for them to be dealt with.

All members of staff are responsible for ensuring that hazardous substances or substances that require special procedures for disposal are disposed of safely and in accordance with the appropriate risk assessment sheet.

Advice may be sought from the Health and Safety Team at Lawn View House 01623 434033.

The person responsible for the collection and management of soiled laundry is: (Residential establishments only)	NA
The person responsible for informing the Waste Authority of any items of general waste to be collected by it but not covered by the general waste agreement with the LA is:	Karen Ratcliffe Office Manager
A member of staff who is concerned that cleaning arrangements are causing a hazard which cannot be rectified immediately should report the matter to:	Linda Azemia Headteacher

Waste Management and Disposal

Waste will be collected daily by:	Alan Huckerby Site Manager
The person responsible for ensuring the safe storage of waste in appropriately sited secure containers and that the containers are chained after emptying to prevent them being moved and set on fire by arsonists is:	Alan Huckerby Site Manager
All members of staff are responsible for reporting accumulation of waste, or large items of waste that require special attention to:	Alan Huckerby Site Manager

Rubbish awaiting collection must never be left where it obstructs escape routes or could aid the production and spread of fire and smoke.

The person who should be contacted if circulation routes are obstructed by rubbish is:	Linda Azemia Headteacher
--	-----------------------------

All staff are responsible for ensuring the good house keeping of their own workrooms, for example, offices, laboratories, workshops, art studios, drama studios and related storage areas.

When rubbish needs to be disposed of it should be reported to: (who will arrange for its safe disposal).	Alan Huckerby Site Manager
The person responsible for the safe disposal of any hazardous substances or special wastes is:	Alan Huckerby Site Manager
The person responsible for ensuring the safe and appropriate disposal of any clinical waste is:	Alan Huckerby Site Manager
The person responsible for checking that the oil tank bund wall is effective is:	NA

Pupils Outside School

Educational Visits and Journeys

The person responsible for ensuring that the appropriate risk assessment and approval is obtained for educational visits in United Kingdom not including and overnight stay is:	Linda Azemia Headteacher
The person responsible for ensuring that the appropriate risk assessment and approval is obtained for educational visits in United Kingdom including an overnight stay is:	Rebecca Joyce DHT

Work Experience

The person responsible for co-ordinating work experience placements, ensuring risk assessments are completed, ensuring students are visited, liaising with work related learning partners as appropriate is:	Karen Ratcliffe Office Manager
--	-----------------------------------

Use of Premises Outside School Hours

The person responsible for co-ordinating lettings of the Premises In accordance with the lettings procedure is:	Julie Donoghue Finance Officer
The person responsible for informing other users of the building of the presence of any hazards which have not been rectified is:	Julie Donoghue Finance Officer
The person responsible for checking that the letting organisation have Risk assessments and appropriate insurance.	Julie Donoghue Finance Officer
The person responsible for checking that the premises are left in reasonable order by other users before locking up is	Alan Huckerby Site Manager

Premises Alterations, Contractor and Deliveries

Adaptations or Improvements to Premises (Buildings and Grounds)

The person responsible for submitting proposals and ensuring that the Asbestos Forms AF1 – 5 are completed and sent to the LA Property Services for approval is:	Linda Azemia Headteacher
--	-----------------------------

Contractors

The person responsible for selecting contractors and vetting contractors health and safety, policies, procedures, risk assessments, method statements, insurance and past health and safety performance, is,	Linda Azemia Headteacher
The person in control of contractors is:	Alan Huckerby Site Manager
Responsibility for liaison with contractors, and for matters set out in the Health and Safety Manual guidance for Control of Contractors:	Alan Huckerby Site Manager

Supplies (Purchasing/Procurement and Deliveries)

The Governing Body will ensure that all equipment and material purchased or procured for use in the school complies with current legislative requirements and standards. The following employees are authorised to place orders for supplies and/or to accept gifts or donations to the school. They must satisfy themselves that the supplies and arrangements for their receipt and use do not compromise the health and safety of employees, pupils and visitors or others. They will also assess any revenue implications of the necessary maintenance of donated items.

Name	Types of Order
Julie Donoghue	
Karen Ratcliffe	
Deliveries of goods will be reported to: who will arrange for them to be taken to the appropriate	Karen Ratcliffe Office Manager

location:	Admin Team
-----------	------------

Welfare

Bullying/Harassment

The school's policy on behaviour (including bullying) is kept:	OFFICE/FROG
Records of bullying incidents and action taken are kept:	OFFICE/FROG

Stress

The persons responsible for monitoring absence owing to stress related illness is:	Linda Azemia Headteacher
--	-----------------------------

Noise

Any employee concerned about the noise levels at work should report the matter to: who will arrange for remedial action or for an assessment to be made by the Health and Safety Team	Linda Azemia Headteacher
---	-----------------------------

Smoking

Smoking in public buildings is prohibited since 2005. All staff will be made aware of the law as part of their induction. NCC Policy also prohibits smoking on any part of the premises including outside areas right up to the boundary of the property.

All job applicants will be informed of the no smoking policy.

The Governing Body recognises that some employees may have difficulty in complying with this policy. Counselling sessions can be organised for those staff that require assistance. Other help may also be available. Requests for support should be made to:	Linda Azemia Headteacher
---	-----------------------------

Insurance

In addition to the insurance arranged with the LA the Governing Body has decided to arrange the following additional cover.

Insurance Company	Details
RPA and Zurich	

Inspections (External and Internal)

Catering (For completion only by schools with a catering operation on site)

In-house Catering

The person responsible for monitoring the preparation of food, the nutritional standards of meals, and the maintenance of satisfactory hygiene standards is:	Mary Keightley Catering Manager
--	------------------------------------

Visits and Recommendations of Enforcing Authorities e.g. Health and Safety Executive (HSE), LA Safety Officers, Environmental Health Officer

The person responsible for co-ordinating visits and recommendations; co-ordinate action and report matters requiring authorisation/action to the Governing Body or LA is:	Linda Azemia Headteacher
---	-----------------------------

Internal Health and Safety Inspections

The person responsible for organising and carrying out termly safety inspections, including planning, inspection, reporting is:	Linda Azemia Headteacher
---	-----------------------------

Where possible Health and Safety Inspections will be carried out with the school's health and safety representative(s). Members of the Governing Body will participate with safety inspections where practicable.

A copy will be provided to the school Governors for consideration at their next meeting.

The person responsible for ensuring follow up action on the report is completed is:	Linda Azemia Headteacher Garreth Wilcock Health & Safety Governor
---	--

Management Review

Audit, Review, Performance Measurement and Action Plan

The person(s) responsible for carrying out an annual review of the Statement and its implementation in the school is/are	Linda Azemia Headteacher
The person responsible for compiling and implementing the schools annual health and safety action plan, including action for improvements in the appropriate development plan is:	Linda Azemia Headteacher
Employee absence statistics (i.e non-confidential) for the purposes of performance measurement are kept:	Linda Azemia Headteacher

Note: The schools Health and Safety Team is responsible for external health and safety audit of the management of health and safety in the establishment.

Signed Headteacher

Date

Signed Chair of Governors

Date